



Blackstone Models Long Caboose Detail Parts Installation

The following information will serve as a guide to the discerning modeler regarding the application of the spare parts included with the Blackstone Models long caboose. The photo album, *Narrow Gauge Pictorial Volume V Cabooses of the D&RGW*, by Robert L. Grandt, is a great resource to use when applying these details to match your specific modeling era.

Table of Contents

| | |
|--------------------------------------|---|
| Included Parts | 2 |
| Marker Lamps | 3 |
| Accessing the Caboose Interior | 4 |
| Side Window Awnings | 5 |
| Roof grab Irons | 6 |
| Ladder Extensions | 7 |
| Side Window Inserts | 8 |

INCLUDED PARTS

Your spare parts bag includes:

- 1 Left Marker Lamp
- 1 Right Marker Lamp
- 7 Side Window Awnings
- 3 Roof Grab Irons
- 3 Left-Hand Ladder Extensions
- 3 Right-Hand Ladder Extensions
- 2 Side Window Inserts (Road Number 0503 only)

Read all instructions carefully before attempting to install any of the detail parts.

Before beginning, remove any flash from the moldings with a small file or X-Acto knife if needed.

MARKER LAMPS

Train crews used marker lamps to identify the rear end of a train. They could change the position of the lenses to satisfy railroad rules and procedures. Before installing the marker lamps, you will need to decide on which end of the caboose you wish to position them. They were always mounted on the rear of the train, but cabooses were routinely coupled into the train in both directions. Decide which end of the caboose will be your "rear" and install the marker lamps on that end.

Required Tools:

- ACC Glue
- Tweezers
- Drill or Dremel Tool
- Drill Bit #68
- Soft Pad

Instructions

1. Using a soft pad as a work surface, lay the caboose on one side.
2. On the end you have chosen, drill a small hole in the side of the caboose, just above the marker lamp bracket as shown in Figure 1. Repeat on the opposite side of the crummy. Test fit the marker lamps before gluing. You may need to drill a slightly larger hole for the pin on the marker lamp to fit.

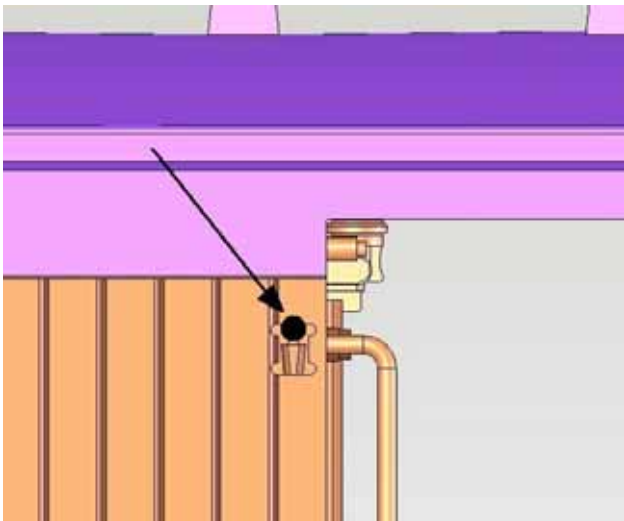


Figure 1

3. Grasp the marker lamp with the tweezers, apply ACC to the small pin on the marker lamp (shown in Figure 2), and affix the lamp to the side of the caboose body. **Make sure to mount the marker lamps with the red lenses showing to the rear of the caboose.** Repeat this process on the opposite side of the caboose.

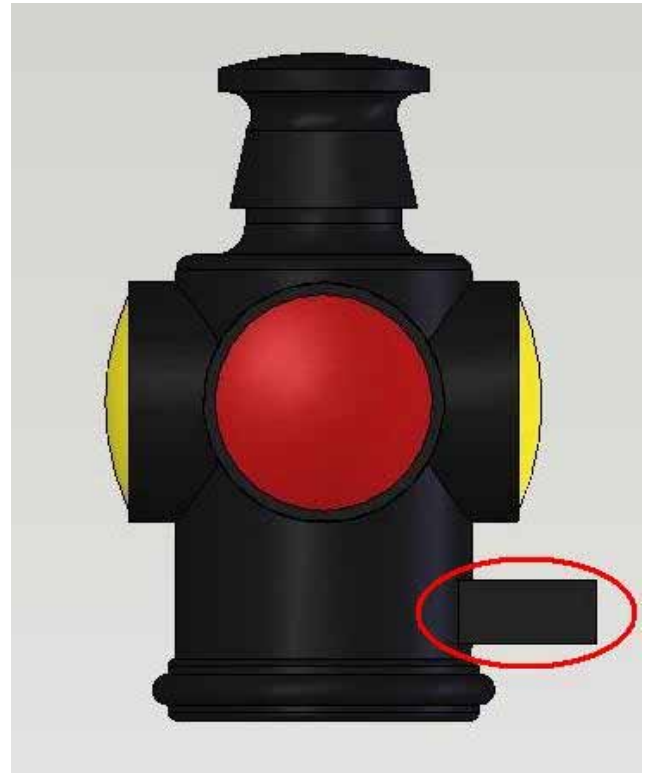


Figure 2

ACCESSING THE CABOOSE INTERIOR

Marker Lamp Lighting Kits and interior lighting are available from other suppliers. Should you choose to install them, the Blackstone Models caboose is equipped with electrical pickup on the trucks to enable the easy installation of lighting accessories. Please follow manufacturer's guidelines for installation.

Instructions

1. Gently grasp the caboose cupola by the ends with a thumb and forefinger. Squeeze lightly to depress the snaps and pull the cupola free from the roof, being careful not to bend the small chimney strap. Set the cupola aside.
2. Note the snaps on the inside of the caboose at the floor. There are four snaps to hold the body on, two at one end and two at the other. By inserting a finger into the hole in the roof, gently push out on the side of the caboose body at each end and lift the body from the chassis.
3. Remove the tape holding the wires from each truck to the floor of the chassis, and then install your aftermarket lighting accessories following the manufacturer's instructions.
4. Once you have installed the desired lighting, gently snap the caboose body onto the chassis. When assembled, make sure the end with the opening for the cupola is located on the B end of the car. This is the end of the car toward which the brake cylinder clevis points. **Note: Assemble caboose road number 0503 with the opening for the cupola on the A end of the car.**
5. Replace the cupola by gently angling it to fit under the small chimney strap. There is a small depression on the roof of the cupola for the chimney strap; be sure to place the cupola in the correct direction.

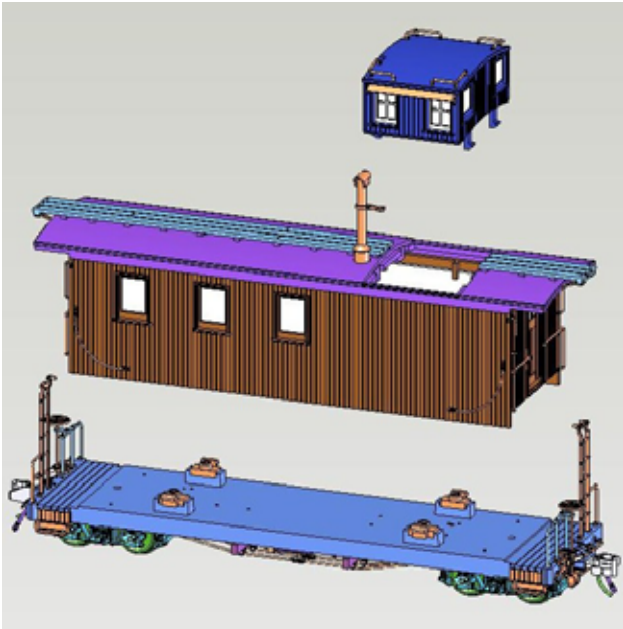


Figure 3

SIDE WINDOW AWNINGS

Some of the long cabooses road numbers had folded tin awnings mounted over the side windows. Here are some guidelines, should you wish to affix the awnings to your model.

Required Tools

- ACC Glue
- Tweezers
- Soft Pad

Instructions

1. Holding the front of the awning with tweezers, apply the ACC glue to the back of the awning and affix the awning to the side of the caboose body, just over the window frame.

Note: The long side of the awnings is the side that mounts to the caboose, as shown in Figure 4.

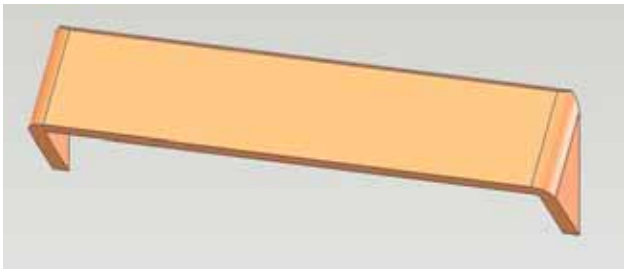


Figure 4

2. Repeat step 1 with the remainder of the awnings as desired.



Figure 5

ROOF GRAB IRONS

Before the familiar ladder extensions (added in the 1950s), the D&RGW long cabooses had grab irons on each end of the roof, to aide in climbing the ladder. If you model the earlier era, you may wish to apply the grab irons for that extra detail.

Required Tools

- ACC Glue
- Tweezers
- Drill or Dremel Tool
- Drill Bit #80
- Soft Pad

Instructions

1. With the caboose setting on the soft pad, lay the grab irons on top of the roof and mark the correct hole spacing. Drill two holes into the top of the roof above the ladder on each end.

Note: Figure 6 shows the general location for the grab iron. Refer to prototype photos for the correct position for your road number.

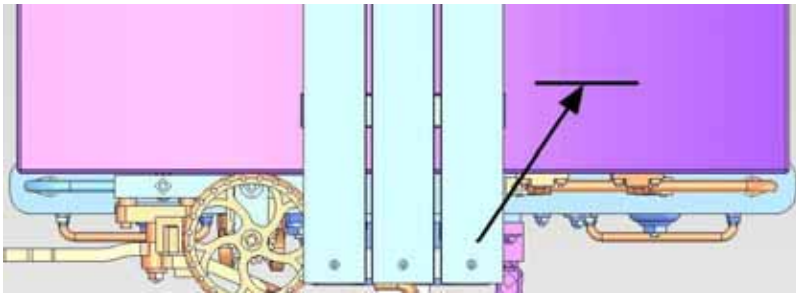


Figure 6

2. Grasp one of the grab irons with the tweezers and test fit the grab irons before applying ACC glue to the ends of the wire. Place the #80 drill bit on the surface of the roof between the holes. Push the grab iron into the holes until it contacts the drill bit. This will allow the proper spacing between the roof and the grab iron.
3. Repeat steps 1 and 2 to install the grab iron on the other end of the caboose.

LADDER EXTENSIONS

The D&RGW added ladder extensions to the cabooses in the 1950s, in compliance with new safety standards. Your Blackstone Models crummy includes ladder extensions you may apply for that later-era look. **Note: There are left-hand and right-hand extensions. When properly applied, the nut/bolt/washer (NBW) detail will face the outside of the ladder. The small notch on the back of the extension fits over the roof eaves when correctly installed.**

Required Tools

- ACC Glue
 - Tweezers
 - Small Clamps
 - X-Acto Knife
 - Instructions
1. Using an X-Acto knife with a sharp blade, gently shave off the top NBW detail from the ladder on the outside of each side member shown in Figure 7.

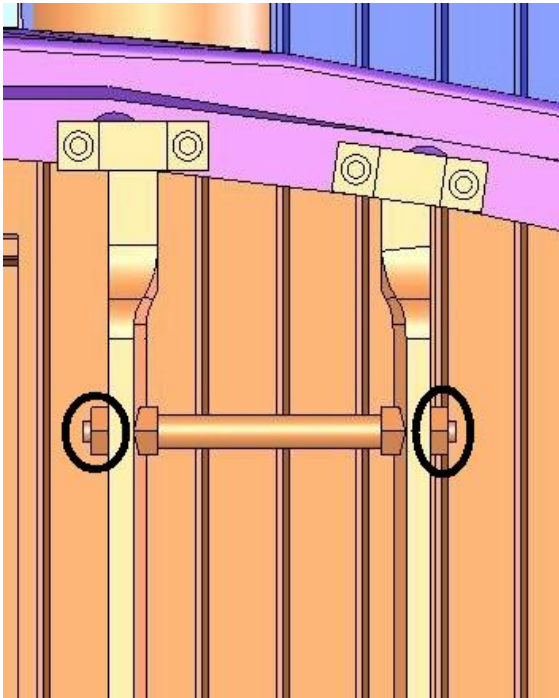


Figure 7

2. Grasp the top of the ladder extension with the tweezers and apply ACC glue to the inside of the ladder extension behind the NBW detail shown in Figure 8.

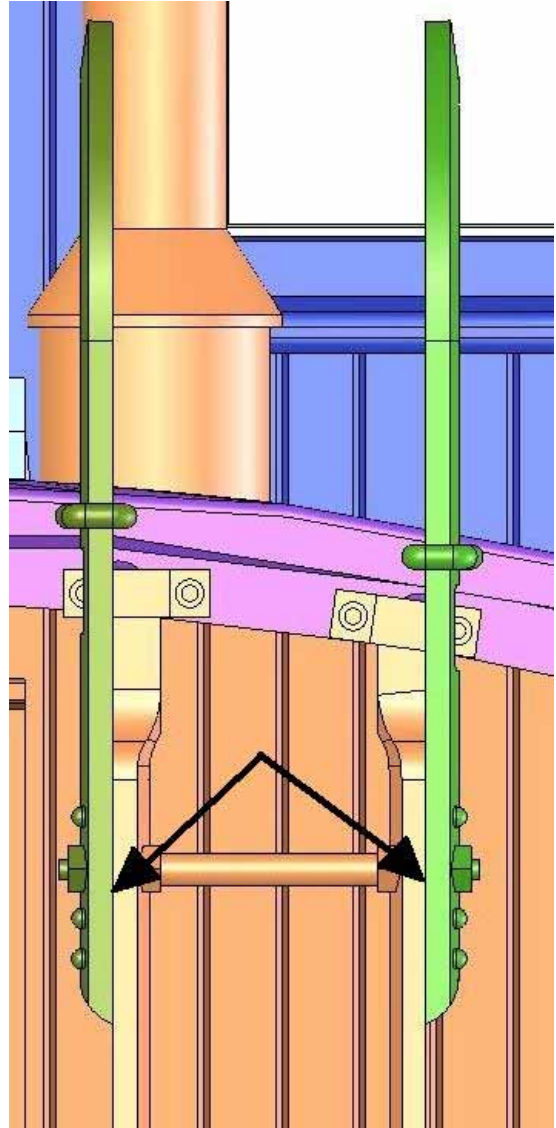


Figure 8

3. Place the ladder extension against the outside of the ladder, making sure that the notch on the back of the ladder extension fits over the roof eaves.
4. Clamp the ladder extension against the ladder side member using a small clamp until the ACC glue has permanently set.

SIDE WINDOW INSERTS (Road Number 0503 only)

In later years, the D&RGW boarded up the first side windows on road number 0503. Please review prototype photos for the proper location and appearance. There were no awnings over these two windows.

Required Tools

- ACC Glue
- Tweezers
- Instructions

Instructions

1. With one of the side window inserts held in the tweezers, test fit the insert to the window. The angled edge, shown in Figure 9, should be mounted toward the bottom.

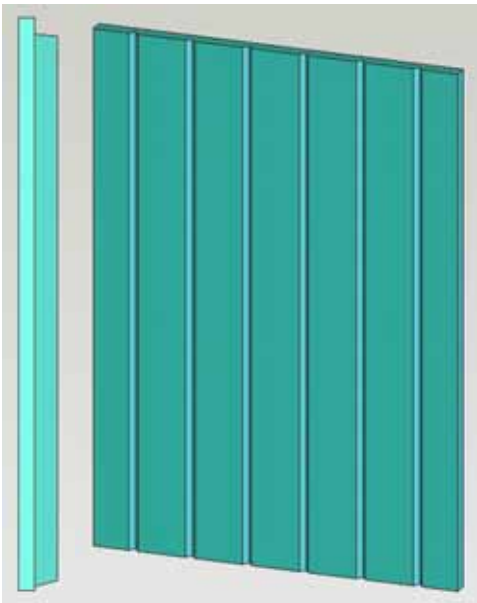


Figure 9

2. Apply ACC glue to the back and around the edges of the window insert. Position the insert inside the window and hold it in place until the glue sets.
3. Repeat steps 1 and 2 to affix the second side window insert to the opposite side of the crummy.